

MARGARET FISCHER DAVIS EL

Campus Improvement Plan 2020/2021

"PG is made for ME."



Natalie Reeves
2800 Galleria Oaks Texarkana, Texas 75503
903-838-0528
nreeves@pgisd.net

Date Reviewed:

DMAC Solutions ®

Page 1 of 26

Date Approved:

1/26/2021

Margaret Fischer Davis Elementary

Mission:

The mission of Margaret Fischer Davis Elementary is to ensure high levels of learning for all students in a safe and nurturing environment.

Vision:

The vision of Margaret Fischer Davis Elementary is committed to providing an inclusive support system that fosters the love of learning for all students and staff. We envision a school in which staff:

- Work together in collaborative teams to ensure high levels of learning
- Monitor each student's progress on a frequent basis
- Establish a personal commitment to the academic success and general well-being of each student
- Provide a guaranteed and viable curriculum
- Create strong partnerships with parents/guardians to support the learning of their child

Shared Beliefs

1. What is it we want our students to learn?
2. How will we know if each student has learned it?
3. How will we respond when some students do not learn it?
4. How can we extend & enrich the learning for students who have demonstrated proficiency?

Site-Based Decision-Making Committee

Name	Position
Reeves, Natalie	Campus Non-Teaching Staff
Mims, Drew	Business Representative
Gibson, Summer	District Non-Teaching Staff
Gill, Jasmine	Teacher
Bannon, Kali	Community Representative
Roberts, Autumn	Teacher
Killet, Kirk	Business Representative
Forand, Judy	Teacher
McCulloch, Lacey	Community Representative
Thornberry, Melissa	Teacher
Craig, Lyndsey	Parent Representative
Twisdale, Jenny	Advisory Member
Day, Kelly	Advisory Member
Beaird, Brittany	Advisory Member
Meador, Holland	Parent Representative
Summers, Regan	Advisory Member

Resources

Resource	Source	Amount
IDEA B Preschool Funds	Federal	\$8,507
IDEA-B Special Education	Federal	\$189,315
Title I, Part A	Federal	\$82,505
PreK Funding	Local	\$238,637
Regular Ed Program(L)	Local	\$750,890
Bilingual/ESL	State	\$20,478
Gifted & Talented	State	\$24,210
Regular Ed Program	State	\$543,748
Special Education	State	\$242,058
State Compensatory	State	\$6,750

Comprehensive Needs Assessment Summary

Margaret Fischer Davis Elementary 2020-2021

Comprehensive Needs Assessment Summary

Margaret Fischer Davis Elementary 2020-2021

Focus Areas

The mission of Margaret Fischer Davis Elementary (MFDE) is to ensure high levels of learning for all students in a safe and nurturing environment.

- **Intentional instructional program**
- **21st century learning opportunities through a STEAM based approach**
- **Safe and conducive learning environment**

Demographics

Demographics Summary

Margaret Fischer Davis Elementary was established in 1916. Approximately 530 students in grades Pre-K, Kindergarten, 1st grade, and 2nd grade compose the campus student group. The student population is 63.9% White, 16.7% African American, 8.0 % Hispanic, 7.6% Multi-Race, 2.7% Asian, 1.2% other races. Staff demographics include 55 total staff members, of which are certified professionals. MFDE is comprised of a head principal, an assistant principal, a counselor, 38 appropriately certified teachers, a nurse aide, one secretary, six highly qualified paraprofessionals, three cafeteria staff members, and three custodial staff members.

Demographics Strengths

- Recognition of individual differences among students

Demographic Needs

- Transfer students into the district may not have the same educational background as students who have been educated in the district for several years.
- Ensure each student achieves growth among each demographic group.

Student Achievement

Student Achievement Summary

Curriculum, instruction, assessments, and professional practices are monitored and adjusted systematically in response to student information and data from multiple sources. Upon reviewing the Texas Education Agency 2019 Accountability Reports. Margaret Fischer Davis Elementary Met Standard. MFDE received four distinctions when compared to our comparison group of 40 schools. Distinctions earned were:

Academic Achievement in ELA/Reading, Academic Achievement in Mathematics, Academic Achievement in Science, and Postsecondary Readiness.

Student Achievement Strengths

- 4 out of 6 Distinctions (Based on the most recent STAAR test which was Spring 2019.)
- Continue to utilize Professional Learning Communities (PLC's) and Data Room
- 100% appropriately certified professional staff

Student Achievement Needs

- Transfer students into the District may not have the same educational background as students who have been educated in the district for several years
- Student Attendance - (95.5%)
- Ensure progress for each student to achieve Advanced Academic Performance in Student Achievement, Student Progress, and Closing Performance Gaps and Post-secondary Readiness among each demographic group.
- Improve student achievement and monitor student progress in grades K through 2nd in core subjects of the state Texas Essential Knowledge and Skills (TEKS)
- Implement Leveled Literacy Intervention program along with progress monitoring and scheduling students.

Culture & Climate

Culture & Climate Summary

At Margaret Fischer Davis Elementary we have high family and community involvement. Our kindergarten class attends the pumpkin patch at William United Methodist Church. We have approximately 400 parents attend Meet the Teacher night at the beginning of the school year. We also have a built-in day in the calendar for Parent/Teacher conferences in October. We emphasize Hawk pride throughout the year during morning announcements, during special programs and in good character recognition. Students and teachers alike support and check behaviors to encourage good choices. Teachers understand building relationships with PGISD students is imperative to their success. This is achieved through ongoing communication with both students and parents/guardians. We invite grandparents to visit our school, where

students share donuts and tour the school in celebration of Grandparents Day. Parent volunteers are readily available and are welcomed to assist in daily activities. We also encourage parents to eat lunch with their child during lunchtime. Our district nurse team has provided general training for Diabetes, allergens, general care and assistance to teachers for safely dealing with common medical issues at school. PGES drills will be built into the school crisis drill schedule. Pleasant Grove Elementary is a well-maintained building, with a protected security system for student safety. The custodial staff takes pride in its appearance. We are thankful for our partnerships with parents and the community. According to parent surveys the students are safe and happy.

Culture & Climate Strengths

- Bully-free initiative
- Installed Security System makes teachers, parents, and students feel safe
- Counseling
- Relationships between teachers and students

Culture & Climate Needs

- Provide more opportunity to seek student/parent input
- Further opportunities to seek staff input
- Building and sustaining Leadership capacity among staff and students

Staff Quality, Recruitment and Retention

Staff Quality, Recruitment and Retention Summary

Currently we have 55 employees at Margaret Fischer Davis Elementary. Our campus employees are currently all certified and appropriately certified. Teachers are evaluated using T-TESS data from formal and informal observations. Data from walk throughs will also be used to measure and maintain high quality instruction. Professional development is encouraged and supported in specific areas of need for student/subjects assigned. Professional development is provided for areas of concern as well as current and innovative strategies provided for all staff for continuous improvement. Teachers will also continue to use the Region VIII Service Center in order to grow as leaders in the field of education. Our new teachers have multiple layers of support beginning with partner teachers in grade level/subject areas. Planning/strategy support is provided through weekly Professional Learning Communities. District Administration provides a New Teacher Cohort that communicates with new staff members to ensure a successful integration into their position. MFDE maintains a teacher/student ratio of 22:1.

Staff Quality, Recruitment and Retention Strengths

- New Teacher cohort and assigned mentors

- Team collaborative meetings
- Growing and promoting within our district
- Leadership and Master's Degree stipends
- Quality Professional Development

Staff Quality, Recruitment and Retention Needs

- Keep teachers current on the latest instructional techniques through professional learning opportunities
- Building leadership capacity

Curriculum and Instruction

Curriculum and Instruction Summary

Pleasant Grove ISD is responsible for ensuring fidelity in the implementation of the Texas Essential Knowledge and Skills (TEKS) in the foundation and enrichment curriculum. The curriculum is in a state of continuous study and revision, readily adaptable to meet the changing needs of children and provide a basis of knowledge. In addition, the TEKS Resource System is an available resource for our teachers. This is used as the scope and sequence of our curriculum. This system allows teachers to gauge the effectiveness of their curriculum, ensure proper pacing, and provides access to rigorous questioning strategies and assessments. Pleasant Grove Elementary is implementing the first key elements of Balanced Literacy within their reading/language arts curriculum. Teachers use DMAC, a data software, to disaggregate assessments and drive instruction. Teachers attend workshops provided by Region VIII to enhance curriculum. Additionally, they attend weekly PLC meetings and set goals through T-TESS. All staff members receive yearly updates in content areas, Gifted and Talented, and technology. Special services teachers are available in the areas of Gifted and Talented, Dyslexia, English as a Second Language (ESL), Reading Interventionist, and Special Education. These programs assist with response to intervention within the school day as remediation for all students.

Curriculum and Instruction Strengths

- Campus visits from Region VIII Education Service Center Specialists who coach, model, observe, and provide feedback on instructional delivery and resources
- Continue to deconstruct TEKS and review/utilize scope and sequence
- TEKS Resource System to assist core teachers with pacing, vertical alignment, sequencing, and rigorous assessments
- Goals of our campus are achieved through thoughtful planning, which thoroughly aligned with the district's mission.
- All classrooms are equipped with interactive panels, document cameras, and other educational software, all of which contribute to the production of high-achieving students

- Continue to use Aware as a new data management program.
- Continue to use Eduphoria, for housing lesson plans.
- Continue to implement and utilize Collaborative Team Meetings
- Provide support as we begin to roll out the Balanced Literacy program and new ELAR adoptions.

Curriculum and Instruction Needs

- Expand a STEAM-based curriculum and collaborative approach
- Challenge and prepare students for the next level of education and beyond to meet their full potential, utilizing a well-balanced and appropriate curriculum.
- Increase progress monitoring for all students for the purpose of RTI
- Increase in progress measure for all SPED in all subpopulations

Family and Community Involvement

Family and Community Involvement Summary

PGISD's mission statement and other vital information is disseminated to all stakeholders through school websites, school publications, in-service programs, and student/parent orientations. PG Education Foundation, PG Connection, Campus-Level Planning and Decision-Making Committee, all provide meaningful roles in the support and educational impact on our students. Students and parents have access to all grade-related policies, procedures, and a "live" gradebook that is accessible by students and parents. Classroom teachers, counselors, and other campus organizations utilize social media to showcase and share upcoming events. Margaret Fischer Davis Elementary provides many programs throughout the year to share appreciation, joy, and academic growth with parents and community members.

Family and Community Involvement Strengths

- Kennedy Center partnership with TRAHC
- Chic-fil-a Leadership program
- PG Education Foundation
- PG Connection
- Open House - Texas Public School Week
- Parent Notification System
- 2nd Grade Choir Performances

- Christmas Tree Lighting Program
- Veterans Program
- Online Gradebook
- PreK Family Night
- Kindergarten Adventure
- Grade level parent meetings

Family and Community Involvement Needs

- Further partnerships between students, parents, the community, and business
- Increase participation with the Kennedy Center Cohort
- Maintain all methods of school communication

School Organization

School Organization Summary

Margaret Fischer Davis Elementary's kindergarten through 1st grade are self-contained classrooms, 2nd grade classrooms are partner-taught, ELAR and Math, Science, and Social Studies. The master schedule allows for Rtl (response to intervention) within the school day as remediation for all students. This time allows for pull out language arts (reading and writing) and math interventions. Dyslexia programs are served during this time as well. Teachers are allowed to work with a small group of academically weak students while a large portion of their class attends other academic challenges to enhance the performance of all students. This creative schedule resulted in teacher recommendations for grouping and instructing. The groups are evaluated after each universal assessment (usually a nine weeks assessment) for adjustments and fluid student instruction. Collaborative Team Meetings (CTMS), are once a week, which allow teachers to disaggregate data, reflect on lesson plans, and use data to drive instruction.

School Organization Strengths

- Master schedule that maximizes instructional time and provides for flexible scheduling of special programs.
- Commitment of teachers to classrooms
- RTI period allows the opportunity for student specific instruction based on individual data

School Organization Needs

- Continue the use of data to accelerate and drive instruction
- Implement an elaborate STEAM project to share with parents

Technology

Technology Summary

The elementary currently has interactive panels and document cameras in every classroom. Classrooms also have teacher workstations. The campus has approximately 120 chrome books, 200 ipads and multiple access points to provide wireless connectivity. All teachers and staff have access to Impero Education Pro for network management, online safety, and classroom technology management.

Technology Strengths

- Campus administrators are proponents of using technology in the classroom as an instructional resource to improve student learning.
- Staff is motivated to explore new digital resources and how they can be used for differentiation among learners.
- The campus embraces technology for parent and stakeholder communication.
- Teachers utilize web-based assessment and data management tools to monitor student learning and to make instructional decisions.
- All students and staff have access to the G Suite for K-12 Education tools.
- Instructional staff and leadership have access to web-based TEKS Resources for curriculum management and planning.
- District-wide use of web-based Eduphoria streamlines lesson planning, professional learning, Technology Help Desk and Maintenance/Travel requests
- Access to ipad and chromebook carts
- Guest wireless access
- Mobile teacher devices for collaborative learning

Technology Needs

- Professional learning to support teacher growth and development and to build capacity about how to use digital tools for instructional support.
- Technology resources and professional learning that supports STEAM and MakerSpace learning environments and builds capacity for integrating experiential learning opportunities.
- 1 to 1 chromebook or ipads for all classrooms to provide access to 21st century tools and resources for learning.
- Ipad and Chromebook cart for the library for research purposes
- Content-specific digital tools and resources to support core and elective classes.

MARGARET FISCHER DAVIS EL

Goal 1. Increase academic achievement for all students, while closing the gap between student populations in the areas of Math and ELAR.

Objective 1. 90% of students will meet or exceed local performance standards in all core subjects in grades Pre-K through 2nd grade.

Objective 2. 75% of 1st and 2nd graders will be reading on grade level by June 2021.

Objective 3. Through the use of a well-balanced curriculum and multi-tiered system of support, 80% of students will demonstrate growth.

Objective 4. 100% of Pleasant Grove Elementary School teachers will be appropriately certified.

Objective 5. Increase attendance rate to 97% for all students.

Goal 2. Increase student, teacher, parent, and community engagement to 90% through communication and participation.

Objective 1. Parents and community will demonstrate a proactive involvement in Pleasant Grove Elementary according to Title I Pleasant Grove Elementary School Parent and Family Engagement.

Objective 2. Provide a welcoming environment where timely information and communication is provided to increase parent and family engagement for all students.

Goal 3. Provide a healthy, safe, physical and emotional environment with a goal of no safety violations.

Objective 1. Increase campus safety for all students/staff.

Objective 2. Campus counselor will provide character education instruction at least once each grading period.

MARGARET FISCHER DAVIS EL

Goal 1. Increase academic achievement for all students, while closing the gap between student populations in the areas of Math and ELAR.

Objective 1. 90% of students will meet or exceed local performance standards in all core subjects in grades Pre-K through 2nd grade.

Activity/Strategy	Person(s) Responsible	Timeline	Resources	Evaluation
1. A comprehensive needs assessment will be conducted by the Campus Site-Based Committee to identify educational strengths and weaknesses in student performance, school culture and climate, staff quality, curriculum and instruction, family and community involvement, school context and organization, and technology. (Title I SW: 1) (Target Group: All) (Strategic Priorities: 1,2,4) (CSFs: 1,3,5,6,7)	Assistant Principal(s), Principal	Twice a Year	(L)Regular Ed Program(L)	01/11/21 - Some Progress
2. Increase scores for all student groups by analyzing progress monitoring data to provide targeted support, enrichment and accelerated learning opportunities. (Target Group: All) (Strategic Priorities: 2) (CSFs: 1,2)	504 Coordinator, Assistant Principal(s), Counselor(s), Director of Learning Services, Director of Special Programs, Principal	Weekly	(F)IDEA-B Special Education, (L)Regular Ed Program(L), (S)Special Education	Summative - Monthly 01/11/21 - On Track
3. TPRI Early Reading Assessment will be administered K-2nd at the beginning of year to identify instructional needs for all learners. The assessment will be administered again at middle of year and end of year and used to adjust instruction to meet the instructional needs of all learners, to enhance the reading curriculum and vertically align with 3rd grade. (Target Group: All,K,1st,2nd) (CSFs: 1,2)	Assistant Principal(s), Principal	BOY, MOY, EOY	(L)Regular Ed Program(L)	01/11/21 - On Track
4. Utilize Aware for instructional materials, strategies, and assessments that align with STAAR tests format. (Title I SW: 1,3) (Target Group: All) (Strategic Priorities: 2) (CSFs: 1,2)	Assistant Principal(s), Counselor(s), Director of Instruction, Principal	Weekly	(L)Local Funds	Summative - student continuous improvement in academic areas that are assessed 01/11/21 - Some Progress
5. Collaborative teams will meet weekly to disaggregate and analyze data to determine student instructional needs and plan for instruction so all student populations meet the challenging state academic standards. (Title I SW: 1,8) (Target Group: All) (Strategic Priorities: 2,4) (CSFs: 1,2)	Assistant Principal(s), Counselor(s), Principal	September, April	(L)Local Funds	Summative - Data will be used to determine and document progress, PLCs, SLO 01/11/21 - Significant Progress

MARGARET FISCHER DAVIS EL

Goal 1. Increase academic achievement for all students, while closing the gap between student populations in the areas of Math and ELAR.

Objective 1. 90% of students will meet or exceed local performance standards in all core subjects in grades Pre-K through 2nd grade.

Activity/Strategy	Person(s) Responsible	Timeline	Resources	Evaluation
6. Continue the integration of a STEAM based curriculum that includes high levels of BLOOMS activities to provide an enriched and accelerated curriculum. (Title I SW: 1) (Target Group: All) (Strategic Priorities: 1,2,4) (CSFs: 1,2,7)	Assistant Principal(s), Director of Instruction, Principal	every 9 weeks	(L)Regular Ed Program(L)	Summative - STEAM activities, data, PLCs, Progress Reports, Report Cards 01/11/21 - On Track
7. K-12 writing expectations will be aligned across the district. ELAR teachers will collaboratively define and publish grade level expectations. Writing teachers will provide professional learning for all content areas to clearly define goals for writing across the curriculum. During PLCs teachers will review writing samples and calibrate for consistency. Digital tools will be utilized when appropriate.	Assistant Principal(s), Digital Learning Specialists, Director of Instruction, Principal	Every 9 weeks	(L)Regular Ed Program(L)	01/11/21 - Some Progress
8. Utilize RTI period for direct Tier 1 and Tier 2 instruction. (Target Group: All)	Assistant Principal(s), Principal	Every 9 weeks		01/11/21 - On Track
9. Arrange for Pre-K and Kindergarten teachers to visit each other's classrooms. (Title I SW: 4,7) (Target Group: PRE K,K) (CSFs: 7)	Assistant Principal(s), Dept. Chairs, Principal, Teacher(s)	Monthly	(L)Local Funds	Summative - Documentation of classroom visits. 01/11/21 - Some Progress
10. Provide future kindergarten teachers with student post-tests and report cards from Pre-K. (Title I SW: 7) (Target Group: PRE K,K) (CSFs: 2)	Dept. Chairs, Teacher(s)	June	(L)Local Funds	Summative - Kindergarten teachers will be given Pre-K data. 01/11/21 - Some Progress
11. Provide additional support for ESL to ensure they have the foundational skills needed to meet challenging academic standards and learn grade level curriculum. (Target Group: ESL) (Strategic Priorities: 2)	Principal		(F)Title I, Part A, (S)Bilingual/ESL	Criteria: TPRI data 01/11/21 - On Track
12. Students who are identified as not making satisfactory progress on grade level curriculum will be provided with intensive reading intervention during the school day. (Target Group: All)	Principal	Quarterly		01/11/21 - On Track

MARGARET FISCHER DAVIS EL

Goal 1. Increase academic achievement for all students, while closing the gap between student populations in the areas of Math and ELAR.

Objective 2. 75% of 1st and 2nd graders will be reading on grade level by June 2021.

Activity/Strategy	Person(s) Responsible	Timeline	Resources	Evaluation
1. Students will be assessed three times a year with Star Renaissance. (Target Group: 1st,2nd) (Strategic Priorities: 2)	Principal	August, January, April		Criteria: Formative 01/11/21 - On Track
2. Implement a phonological awareness program for prekindergarten through second grade. (Target Group: All) (Strategic Priorities: 2)	Principal	Quarterly		Criteria: Formative 01/11/21 - On Track 01/11/21 - Pending
3. Implement an explicit phonics program (Target Group: K,1st,2nd) (Strategic Priorities: 2)	Principal	Quarterly		Criteria: Formative 01/11/21 - On Track

MARGARET FISCHER DAVIS EL

Goal 1. Increase academic achievement for all students, while closing the gap between student populations in the areas of Math and ELAR.

Objective 3. Through the use of a well-balanced curriculum and multi-tiered system of support, 80% of students will demonstrate growth.

Activity/Strategy	Person(s) Responsible	Timeline	Resources	Evaluation
1. Use of emerging technologies and innovative practices will be implemented to enhance instruction. (Title I SW: 1,2,3,5) (Target Group: All) (Strategic Priorities: 2,4) (CSFs: 1,2)	Assistant Principal(s), Principal	Weekly	(F)IDEA-B Special Education, (F)Title I, Part A, (F)Title III Bilingual / ESL, (L)Local Funds	Summative - Istation Reading and Istation Math 01/11/21 - On Track
2. Intensive instructional efforts (including supplies and personnel needed to support this including reading level identification tool) will be focused on specific target groups needing improvement campus-wide and will include differentiated grouping (with small group assistance from paraprofessionals) for targeted intervention needs. (Title I SW: 3) (Target Group: All) (Strategic Priorities: 2,4) (CSFs: 1,2)	Assistant Principal(s), Principal	Per Marking Period	(F)Title I, Part A, (F)Title IV, (L)Local Funds, (S)Special Education	Summative - Gather data to evaluate progress monitoring of academic growth 01/11/21 - On Track
3. Collaborative Team meetings with staff stakeholders will be conducted to ensure proper level of support for all students. (Title I SW: 2,8) (Target Group: All) (Strategic Priorities: 1,2,4) (CSFs: 1,2,6,7)	Assistant Principal(s), Principal	Weekly	(L)Regular Ed Program(L)	Summative - Summative Assessment, Agendas, Sign In Sheet, notes 01/11/21 - Significant Progress
4. A quality prekindergarten program will continue to teach the prekindergarten guidelines established by TEA in order to fully prepare students for kindergarten. (Title I SW: 3,8) (Target Group: PRE K) (Strategic Priorities: 2,4) (CSFs: 1,2)	Assistant Principal(s), Principal	Weekly	(F)IDEA B Preschool Funds, (F)Title I, Part A, (F)Title III Bilingual / ESL, (L)Local Funds	Summative - Pre-K results of pre-tests and post-tests, CLI Engage 01/11/21 - On Track
5. Explore the utilization of the CLI Engage assessment program in Pre-Kindergarten. (Title I SW: 7,8) (Target Group: PRE K) (Strategic Priorities: 2,4) (CSFs: 1,2,7)	Assistant Principal(s), Director of Instruction, Principal	September, January, May	(L)PreK Funding	Summative - CLI Engage Data 01/11/21 - On Track
6. Utilize TEKS Resource System to ensure the development of equitable curriculum, instruction, and assessments and ensure horizontal and vertical alignment. (Title I SW: 2) (Target Group: All) (Strategic Priorities: 2) (CSFs: 1)	Assistant Principal(s), Principal	Weekly	(L)Regular Ed Program(L)	Summative - TEKS Resource System 01/11/21 - On Track

MARGARET FISCHER DAVIS EL

Goal 1. Increase academic achievement for all students, while closing the gap between student populations in the areas of Math and ELAR.

Objective 3. Through the use of a well-balanced curriculum and multi-tiered system of support, 80% of students will demonstrate growth.

Activity/Strategy	Person(s) Responsible	Timeline	Resources	Evaluation
7. Implement Kindergarten and first grade report cards to reflect mastery of standards (Title I SW: 8) (Target Group: K,1st) (Strategic Priorities: 2,4) (CSFs: 1,2)	Assistant Principal(s), Principal	every 9 weeks	(L)Regular Ed Program(L)	Summative - Kindergarten Standard Based Report Card 01/11/21 - On Track

MARGARET FISCHER DAVIS EL

Goal 1. Increase academic achievement for all students, while closing the gap between student populations in the areas of Math and ELAR.

Objective 4. 100% of Pleasant Grove Elementary School teachers will be appropriately certified.

Activity/Strategy	Person(s) Responsible	Timeline	Resources	Evaluation
1. Recruit and maintain appropriately certified faculty and staff. (Title I SW: 3,5) (Target Group: All) (CSFs: 6,7)	Assistant Principal(s), Principal	April, May, June	(F)Title I, Part A	Summative - Staff Certification Records, TTESS Evaluations 01/11/21 - On Track
2. We will provide retention incentives such as leadership and master's degree stipends.	Assistant Principal(s), Principal	April, May, June	(L)Regular Ed Program(L)	Summative - Staff retention rate 01/11/21 - On Track
3. Provide ongoing professional learning and coaching for core content areas.	Assistant Principal(s), Principal	BOY, MOY, EOY	(F)Title I, Part A, (F)Title II, Part A, (L)Regular Ed Program(L), (S)Special Education	Summative - Professional Development Certificates of training attended 01/11/21 - On Track
4. Provide support through new teacher cohort.	Assistant Principal(s), Director of Learning Services, Principal	Every 9 weeks	(L)Regular Ed Program(L)	Summative - Staff retention rate 01/11/21 - On Track

MARGARET FISCHER DAVIS EL

Goal 1. Increase academic achievement for all students, while closing the gap between student populations in the areas of Math and ELAR.

Objective 5. Increase attendance rate to 97% for all students.

Activity/Strategy	Person(s) Responsible	Timeline	Resources	Evaluation
1. Continue to enforce Campus/District policy and procedures concerning attendance. (Title I SW: 1,6,9) (Target Group: All) (Strategic Priorities: 4) (CSFs: 4)	Assistant Principal(s), Principal	Every 9 weeks	(L)Regular Ed Program(L)	Summative - Attendance Data, Attendance Letters sent every six weeks 01/11/21 - On Track
2. Give campus incentives to students who maintain perfect attendance; motivate teachers and students to be here every day through classroom incentives. (Target Group: All)	Assistant Principal(s), Principal	Every 9 weeks	(L)Regular Ed Program(L)	01/11/21 - On Track

MARGARET FISCHER DAVIS EL

Goal 2. Increase student, teacher, parent, and community engagement to 90% through communication and participation.

Objective 1. Parents and community will demonstrate a proactive involvement in Pleasant Grove Elementary according to Title I Pleasant Grove Elementary School Parent and Family Engagement.

Activity/Strategy	Person(s) Responsible	Timeline	Resources	Evaluation
1. Have kindergarten Adventure each April to introduce prospective students to our school. (Title I SW: 6,7) (Target Group: K) (CSFs: 5,6)	Assistant Principal(s), Principal	April	(L)Local Funds	Summative - Number of parents/community members attending Kindergarten Adventure and enrollment forms. 01/11/21 - On Track
2. Have "Meet the Teacher" before school starts so parents and students can meet and talk to their teacher. (Title I SW: 6) (Target Group: All) (CSFs: 5)	Assistant Principal(s), Counselor(s), Principal	August	(L)Local Funds	Summative - Number of parents attending 'Meet the Teacher" 01/11/21 - On Track
3. Have designated day so that parents can pick up their child's report card and conference with the teacher. (Title I SW: 3,6,9) (Target Group: All) (Strategic Priorities: 2) (CSFs: 1,5,6)	Assistant Principal(s), Principal	October	(L)Local Funds	Summative - Parent sign in sheets, Report Cards 01/11/21 - Some Progress
4. During Public School Week invite parents to eat lunch with their child and tour the hallways and classroom (Title I SW: 6) (Target Group: All) (Strategic Priorities: 4) (CSFs: 5)	Assistant Principal(s), Counselor(s), Principal	March	(L)Local Funds	Summative - Parent Participation 01/11/21 - Pending 01/11/21 - Some Progress
5. Have "Grandparents Day" (Title I SW: 6) (Target Group: All) (CSFs: 5,6)	Assistant Principal(s), Counselor(s), Principal	March	(L)Local Funds	Summative - Grandparent Participation 01/11/21 - Pending 01/11/21 - Some Progress
6. Continue to invite parent/community volunteers to assist with school activities, such as organizing the Book Fair, helping with teacher appreciation week, and assisting as needed within the campus (Title I SW: 6) (Target Group: All) (CSFs: 5)	Principal	March, May; Weekly	(L)Local Funds	Summative - Volunteer Attendance and Participation 01/11/21 - On Track
7. Evaluate/develop and distribute the School-Parent Family Engagement Policy. (Title I SW: 6) (Target Group: All) (Strategic Priorities: 4) (CSFs: 5,6)	Assistant Principal(s), Principal	August	(L)Local Funds	Summative - Parent sign in sheets. 01/11/21 - On Track
8. Continue Veterans Day Program - where	Assistant Principal(s),	November	(L)Regular Ed Program(L)	Summative - Veteran Attendance,

MARGARET FISCHER DAVIS EL

Goal 2. Increase student, teacher, parent, and community engagement to 90% through communication and participation.

Objective 1. Parents and community will demonstrate a proactive involvement in Pleasant Grove Elementary according to Title I Pleasant Grove Elementary School Parent and Family Engagement.

Activity/Strategy	Person(s) Responsible	Timeline	Resources	Evaluation
our students put on a program to honor our Veterans. Veterans are invited to attend. (Title I SW: 6) (Target Group: 2nd) (CSFs: 5,6)	Counselor(s), Principal			Parent Attendance 01/11/21 - Pending
9. Continue to have the 2nd grade choir perform at the Christmas Tree Lighting, nursing homes, Veterans Day program, and an evening performance at the end of the year. (Title I SW: 6) (Target Group: 2nd) (CSFs: 5,6)	Assistant Principal(s), Counselor(s), Principal	November, May	(L)Regular Ed Program(L)	Summative - Parent attendance/participation 01/11/21 - Pending

MARGARET FISCHER DAVIS EL

Goal 2. Increase student, teacher, parent, and community engagement to 90% through communication and participation.

Objective 2. Provide a welcoming environment where timely information and communication is provided to increase parent and family engagement for all students.

Activity/Strategy	Person(s) Responsible	Timeline	Resources	Evaluation
1. Provide media coverage of school events and accomplishments through the use of website, social media, local magazines, newspaper, and Remind 101. (Title I SW: 6) (Target Group: All) (CSFs: 5)	Assistant Principal(s), Principal	Weekly	(L)Regular Ed Program(L)	Summative - Views and likes on the web page 01/11/21 - On Track
2. Continue to develop the process for clear communication between our campus and community through the use of social media, marquee, web page, parent notification system, and parent meetings. (Title I SW: 6) (Target Group: All) (CSFs: 5,6)	Assistant Principal(s), Counselor(s), Principal	Weekly		Summative - views and likes on web page 01/11/21 - On Track
3. Systematic measures are in place to provide information to community members, parents, and staff regarding the campus site-based committee recommendations.	Assistant Principal(s), Principal	Every 9 weeks	(L)Regular Ed Program(L)	Summative - communication page 01/11/21 - On Track

MARGARET FISCHER DAVIS EL

Goal 3. Provide a healthy, safe, physical and emotional environment with a goal of no safety violations.

Objective 1. Increase campus safety for all students/staff.

Activity/Strategy	Person(s) Responsible	Timeline	Resources	Evaluation
1. All visitors will check in at the elementary office utilizing the door entry control system and Hall Pass ID System. Visitors will receive a visitors badge which must be displayed while on campus. (Title I SW: 6) (Target Group: All) (CSFs: 5,6)	Assistant Principal(s), Principal	Daily	(L)Local Funds	Summative - Hall pass will keep a record of daily entries 01/11/21 - On Track
2. All elementary staff will wear ID badges. (Title I SW: 9) (Target Group: All) (CSFs: 6)	Assistant Principal(s), Principal	Daily	(L)Local Funds	Summative - Peer monitoring and classroom visits. 01/11/21 - On Track
3. Conduct safety drills (tornado, fire, lock down). (Title I SW: 1,3) (Target Group: All) (CSFs: 6)	Assistant Principal(s), School Resource Officer	Monthly	(L)Local Funds	Summative - Timed drills documentation and drill observations 01/11/21 - On Track
4. Federal, State, and Local services including the fire department, police department, SWEPCO will be used for campus safety presentation. (Title I SW: 1) (Target Group: All) (CSFs: 6,7)	Principal, School Resource Officer	September, October	(L)Regular Ed Program(L)	Summative - School programs 01/11/21 - On Track

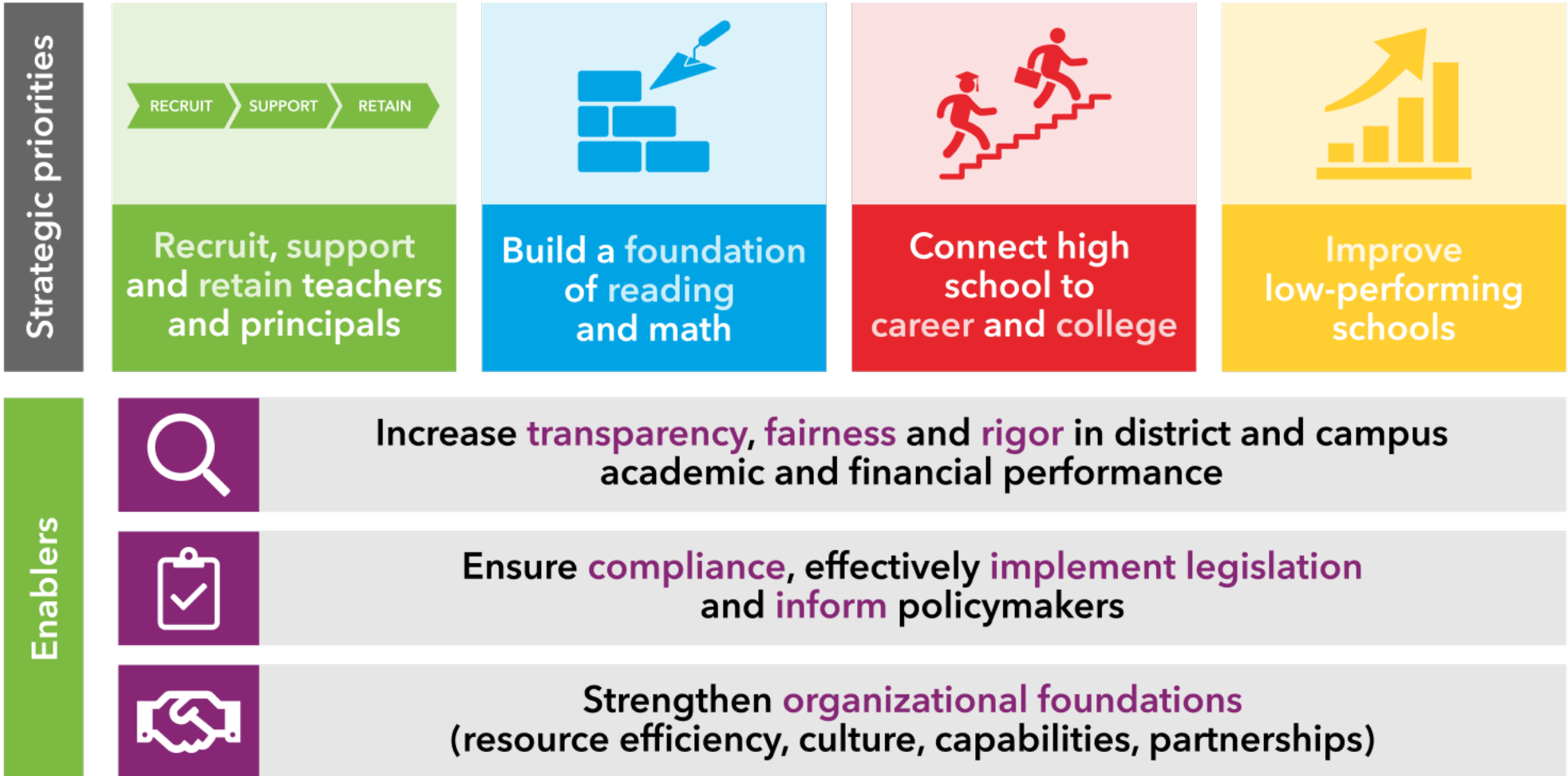
MARGARET FISCHER DAVIS EL

Goal 3. Provide a healthy, safe, physical and emotional environment with a goal of no safety violations.

Objective 2. Campus counselor will provide character education instruction at least once each grading period.

Activity/Strategy	Person(s) Responsible	Timeline	Resources	Evaluation
1. Incorporate drug awareness into the campus curriculum (Red Ribbon Week). (Target Group: All) (CSFs: 6)	Assistant Principal(s), Counselor(s), Principal	October	(L)Regular Ed Program(L)	Summative - Counselor will organize and implement information 01/11/21 - On Track
2. Prevention instruction of bullying, violence prevention, and intervention strategies. (Title I SW: 3) (Target Group: All)	Counselor(s)	Monthly	(L)Regular Ed Program(L)	Summative - Counselor schedule of sessions 01/11/21 - On Track

Every child, prepared for success in college, a career or the military.



**adapted from TEA Strategic Plan - <https://tea.texas.gov>*